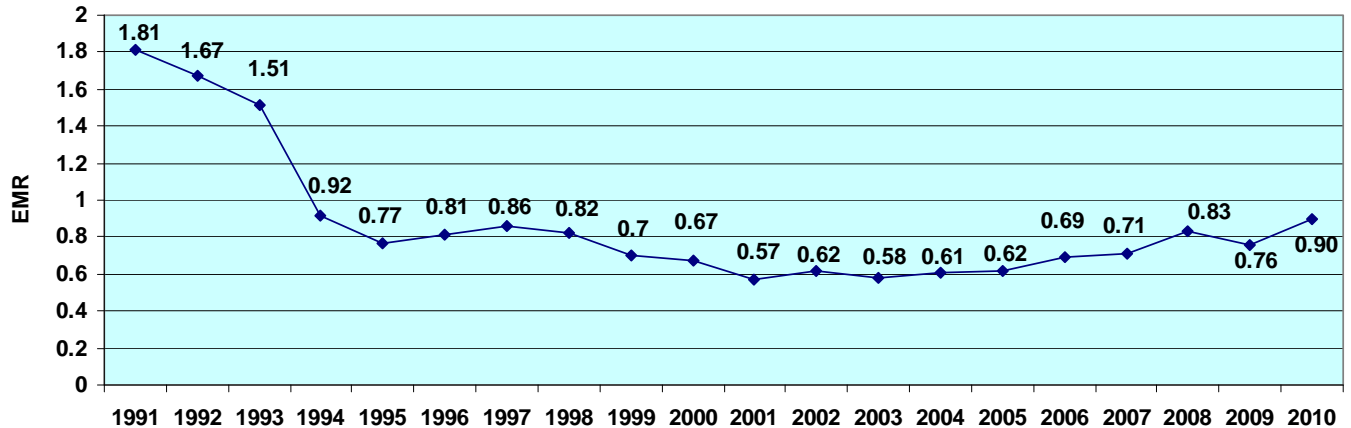


LPR SAFETY PERFORMANCE AND PROCESS

- I. Worker's Compensation Insurance – Experience Modification Rate
 A. Provide your EMR for each of the last three (3) years:

2010	.90
2009	.76
2008	.83
2007	.71



OSHA Incident Rates

- A. The following data is from LPR's OSHA 300 for each of the last three (3) years:

	<u>2009</u>	<u>2008</u>	<u>2007</u>
1. Number of employee hours worked.	885,143	965,475	964,745
2. Number of lost workday cases. <i>Totals from columns H on the OSHA 300 log</i>	1	1	1
3. Number of fatalities. <i>Total from Columns G on the OSHA 300 log</i>	0	0	0
4. Number of cases with days away for restricted activity. <i>Totals from column I on the OSHA 300 log</i>	7	7	6
5. Total number of medical only.	2	4	4
6. Total number of recordable cases. <i>Total from column I & J on the OSHA 300 log</i>	9	11	10
7. Total Incident Rate (TIR) calculated by using the following formula: <i>Total of Line "6" above x 200,000</i> <i>Work-hours worked</i>	2.0	2.3	2.1
8. Lost Work Day Incident Rate calculated By using the following formula: <i>Total of Line "2" above x 200,000</i> <i>Work-hours worked</i>	.23	.21	.21
9. Recordable/Restricted Incident Rate calculated by using the following formula: <i>Total of line "4" above X 200,000</i>	1.6	1.5	1.2